

Solution Brief

SnapServer® SAN S2000 Optimized for Windows

When deciding on your next storage addition it's important that you consider the level of integration that you will get when implementing your new data repository. With the SnapServer SAN S2000 you can rest assured that all aspects of the product were designed to integrate and interoperate with all of your Windows Servers. With an intuitive Windows management interface and provisioning tools that make creating and managing your new storage device effortless, you can spend more time focusing on non-storage related planning, troubleshooting and problem solving.

Fully Integrated SnapServer SAN Manager for Windows

Managing your Windows iSCSI SAN may seem daunting, but with the easy to use SnapServer SAN Manager for Windows, all aspects of managing your iSCSI SAN become effortless. The SnapServer SAN's integrated management interfaces and wizards guide you through every aspect of creating and managing your storage so you're no longer burdened with the arcane complexities of provisioning your storage or managing your mirroring and replication tasks.

Effortless Scalability

Adding capacity to your Windows volumes is achieved with just a couple of mouse clicks. Simply choose the level of capacity utilization you wish to have trigger the automatic expansion of your volumes, leaving the rest up to the intelligence of the SnapServer SAN Manager software. You no longer have to worry about running out of capacity or having to "guess" at how much capacity you "may" need in the future. Simply set the policy for automatically extending your Windows Volume and our intelligent expansion feature handles all those tricky diskpart commands for you. (Figure 1)

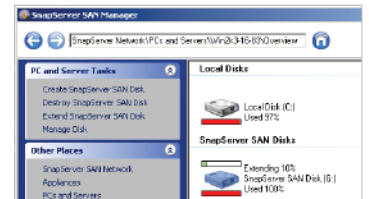


Figure 1 – SnapServer SAN Manager Expanding a Windows Volume

Remember that you're not constrained to the capacity you initially purchase either. Add E2000 expansion units to your existing S2000 to scale your SnapServer SAN up to 120TB.

Integrated Management and Monitoring

The SnapServer SAN software was thoughtfully designed from the beginning to be fully integrated into a Windows environment. The "Single-Click" Volume Creation Wizard creates the target, connects the iSCSI Initiator, then partitions and formats the Windows Volume... all in one click of the mouse. (Figure 2) Compare that to doing each step manually. The included Microsoft VSS provider ensures seamless integration with other VSS-compliant applications and backup tools for Application Consistent backups and replications. The VDS hardware provider allows Microsoft administrators to configure SnapServer SAN storage targets via standard Microsoft storage management tools. The Statistics monitoring feature enables you to compare volumes on the SnapServer SAN appliance and see how heavily they are being used. (Figure 3)

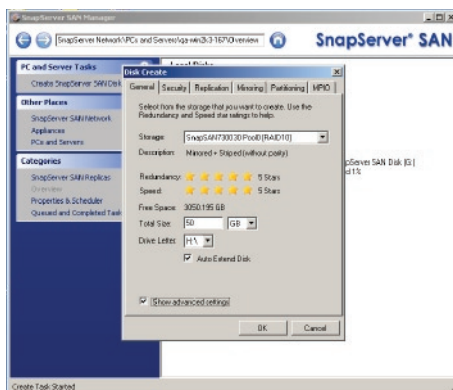


Figure 2 – SnapServer SAN Manager Windows application

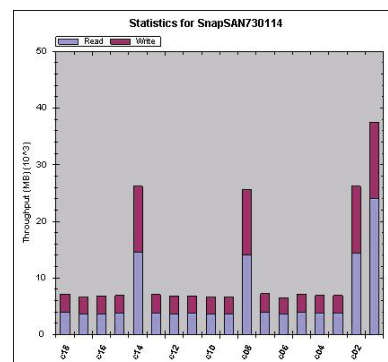


Figure 3 – SnapServer SAN Manager Statistics page showing Throughput of Volumes

Data Protection

Besides the integration with VSS for Application Consistent replication and backup support, administrators also have the option of deploying complete Active-Active Failover solutions with the SnapServer SAN products. Support for Microsoft Cluster Server gives administrators additional flexibility to deploy data protection scenarios that best meet their business needs.

Virtualization Support

Windows Hyper-V Servers are the hottest new deployments of Microsoft virtualization technology. Supporting direct access for guest VM's to iSCSI targets without having to expose the target to the Hyper-V host allows administrators another layer of abstraction and security for their iSCSI SAN's. Extending the SnapServer SAN's VSS provider to also support the Hyper-V VSS Writer for Replications and Backups of Virtual Machines gives another level of data protection and disaster recovery. The Active-Active Failover support in SnapServer SAN's is also extended for clustered Hyper-V Servers giving the ultimate in flexibility and data protection for virtualizing with Microsoft technologies.

Microsoft Certifications
Windows Simple SAN Solution Partner
Windows Server 2003
Windows Server 2008
Windows Server 2008 R2



Corporate:

Tel: 1.800.729.8725
Tel: +1.858.571.5555

Sales:

Tel: 1.888.343.7627 (US)
Tel: +1.858.571.5555 (Int'l)