

Solution Brief

SnapServer® SAN S2000 Optimized for Virtualization

Whether you are using VMware for your virtualization or Microsoft's Hyper-V, the SnapServer SAN S2000 has been thoughtfully optimized to integrate tightly with virtualization platforms. With integrated software for managing the SnapServer SAN's targets directly from within the native virtualization environments, administrators no longer have to utilize multiple tools for managing their virtual server storage.

Fully Integrated SnapServer SAN Wizards

Creating storage for your virtualization environment may be complicated today. With the SnapServer SAN's integrated management interfaces and the Wizards that are there to guide you through every aspect of creating and managing your storage, you're no longer burdened with the complexities of creating your virtual machine storage or managing your mirroring or replication tasks.

Microsoft Specific Features

- "Single-Click" Volume Creation – Create the target; Connect the iSCSI Initiator and Create the Windows Volume... all in one click of the mouse. Compare that to doing each step manually (*Figure 1*)
- Automated Capacity Expansion – No more worries about running out of capacity or having to "guess" at how much capacity you "may" need in the future. Simply set the policy for automatically extending your Windows Volume and our intelligent expansion feature handles all those tricky diskpart commands for you (*Figure 2*)
- Full management interface for the entire SnapServer SAN environment with full support for Microsoft MPIO VDS and VSS.
- Supports the Hyper-V VSS Writer directly for Replications and Backups
- Supports Application Consistency utilizing VSS for Replications and Backups
- Supports access for guest VM's to iSCSI targets directly without having to expose to Hyper-V host
- Active-Active Failover supported for clustered Hyper-V Servers

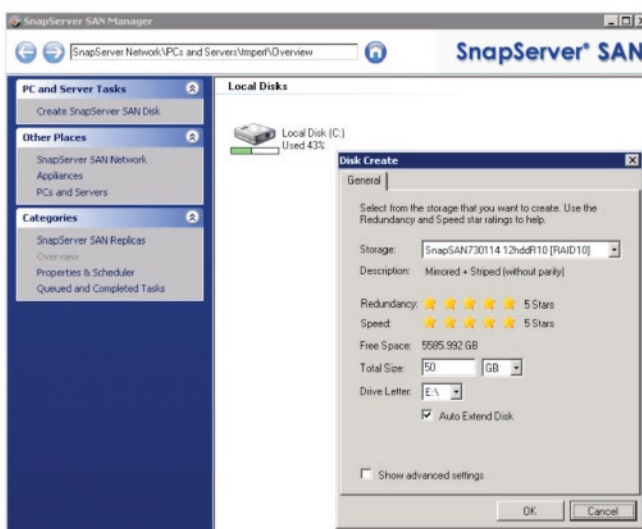


Figure 1 – SnapServer SAN Manager Windows application



Figure 2 – SnapServer SAN Manager's Automated Capacity Expansion for Windows in action

VMware Specific Features

- SnapServer SAN VMware vSphere Plugin – The SnapServer SAN vSphere Plugin creates a new tab within vCenter allowing administrators to manage their ESX environment natively from within their VMware vCenter Server. (Figure 3)
- Ability to effortlessly integrate the SnapServer SAN with VMware storage configuration within the native vSphere manager (Figure 4)
- Active-Active Failover for ESX Datastores
- Enables single interface configuration for S2000 targets, VMware Datastores and VMware High Availability options such as DRS, HA, VMotion, and Fault Tolerance

Vendor	Version	Status	Description
VMware Inc.	4.0	Enabled	Storage Monitoring and Reporting
VMware, Inc.	4.0	Enabled	Displays the health status of vCenter services
VMware, Inc.	4.0	Enabled	Displays the hardware status of hosts (CIM monitoring)
Overland Storage...	4.3.92...	Enabled	SnapServer SAN VMware vSphere Plugin V4

Figure 3 – SnapServer SAN VMware vSphere Plugin

Identification	Device	Capacity	Free	State	Datastore Type
SMDataStore0	eui.00c0b60b23ae0...	99.75 GB	59.20 ...	Unknown	VMFS

Figure 4 – vSphere interface with SnapServer SAN tab integrated

Virtualization Certifications	Supported Releases
VMware	ESX 3.5 Update 5, ESX 4.0 Update 1
Microsoft	Hyper-V Server R2



Corporate:

Tel: 1.800.729.8725
Tel: +1.858.571.5555

Sales:

Tel: 1.888.343.7627 (US)
Tel: +1.858.571.5555 (Int'l)